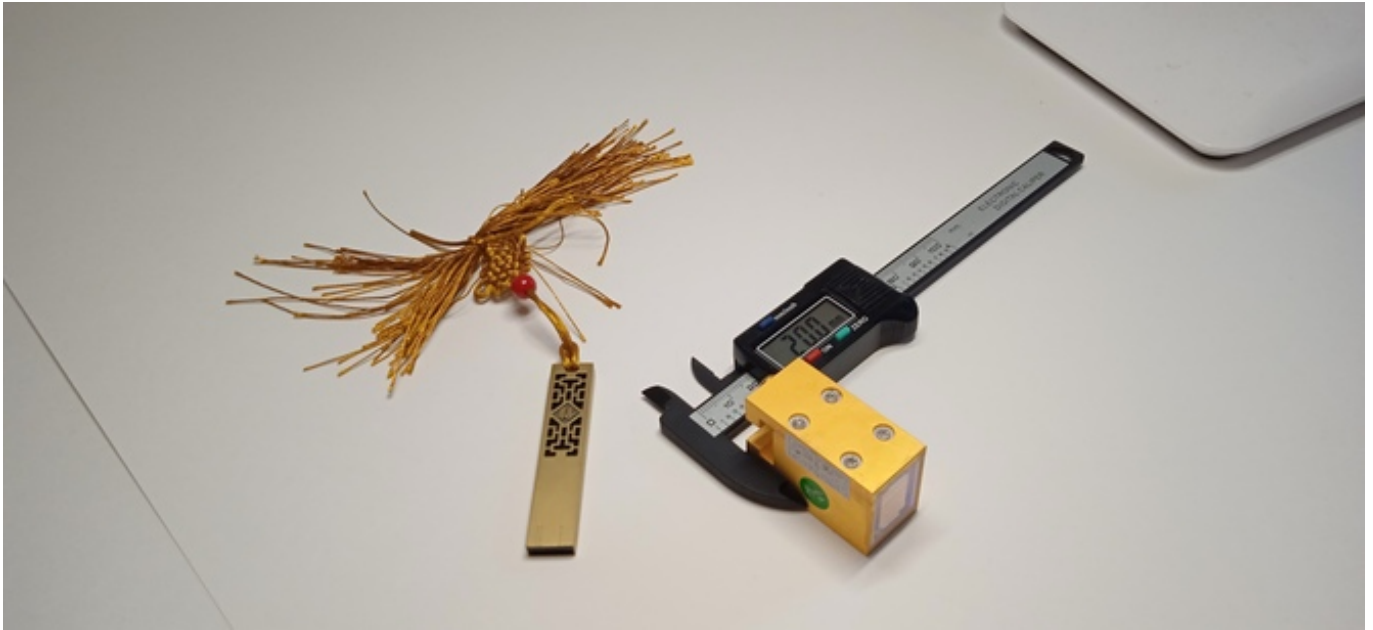


REPLACEMENT DIODE COMPONENT FOR HAIR REMOVAL LASER HANDPIECE



One of the typical problems of the diode laser is that the laser stops issuing impulses, there are no sensations. Damage can be detected visually through the transparent part of the handle.



site WWW.ROMSHI.COM

Laser not delivering results? www.romshi.com (via QR) can help-often it's the diode stack.