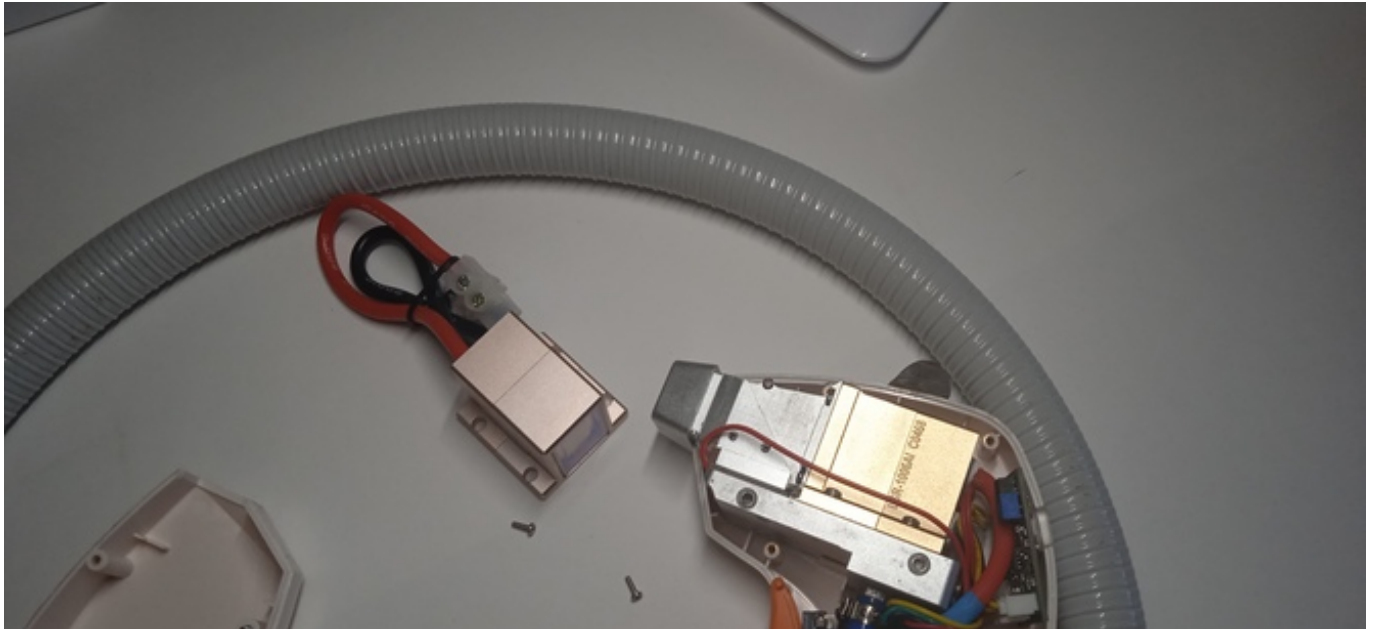


## BACKUP DIODE MODULE FOR DIODE LASER HAIR REMOVAL TOOL



The malfunctions of the diode laser handle are expressed in the following: no light impulses are visible, there is no contact with the skin. Often it is enough to look out the window of the pen to see the problem.



site [WWW.ROMSHI.COM](http://WWW.ROMSHI.COM)

If your laser hair removal tool isn't performing properly, the diode stack might be faulty. Scan the QR code to learn more at [www.romshi.com](http://www.romshi.com).