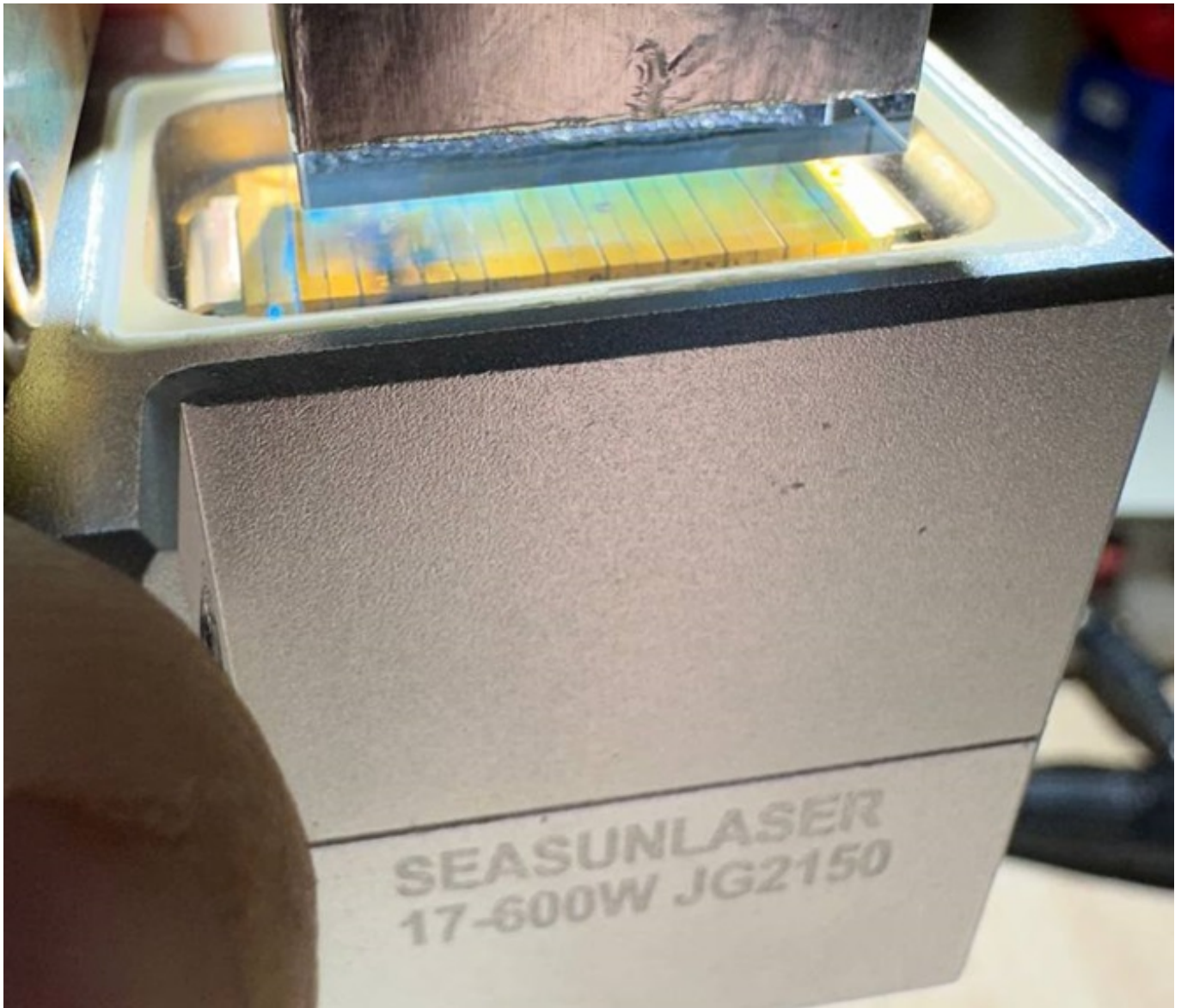


## **CORRECTION OF INTERNAL PROBLEMS MANIPULA**



An order for laser stacks with a capacity of up to 1600 watts is available.



site [WWW.ROMSHI.COM](http://WWW.ROMSHI.COM)

Scan to visit [www.romshi.com](http://www.romshi.com) and explore solutions to laser diode stack problems.