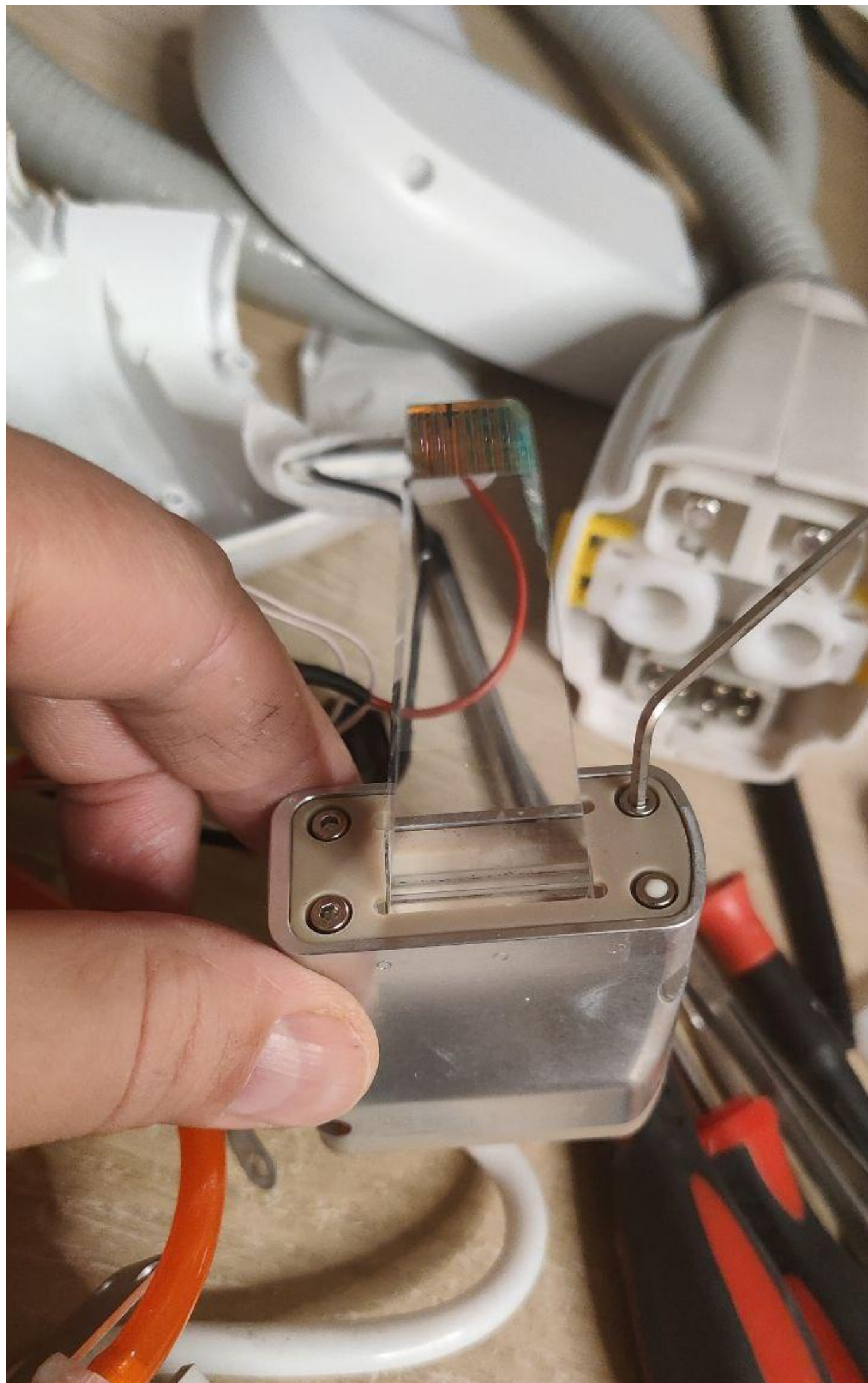


## **DIAGNOSIS AND REPLACEMENT OF SPARE PARTS IN DIODE LASERS.**



We offer extra parts for aesthetic devices with international delivery. Visit [www.romshi.com](http://www.romshi.com) for more details. Contact: +7(918)0110234 (WhatsApp, Telegram). Offering online maintenance guidance for 808nm diode laser systems and handheld unit repairs.



site [WWW.ROMSHI.COM](http://WWW.ROMSHI.COM)

A failing diode stack often leads to poor laser results. Find more at [www.romshi.com](http://www.romshi.com) via QR code.